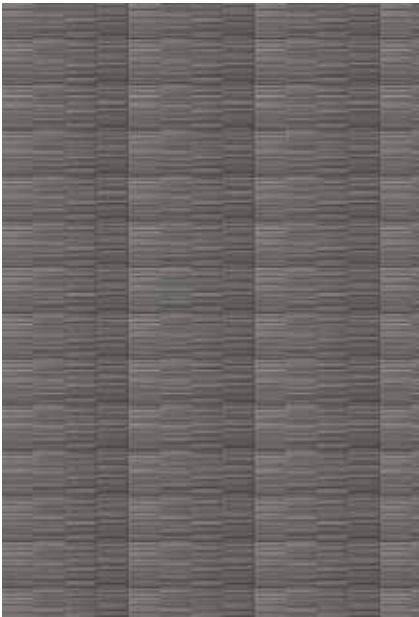


# **bretts bugle**

AUGUST 2011

THE NEWSLETTER FOR BUILDING PROFESSIONALS



## product profile: CSR cemintel fibre cement

Brett's are pleased to introduce the new external walling system from CSR Cemintel Fibre Cement. The Designer Series range is a modern, innovative and distinctive pre-finished walling system ideal for any façade application, and is unique to the Australian market.

Some of the key product features are:

- A range of unique textures and finishes that can be used either as stand alone or composite solutions to produce any number of different designs.
- An innovative fixing system that rapidly reduces installation time.
- A multi layered coating system designed for long lasting performance.

The Cemintel Designer Series range is available in a variety of textures and colours:

- ICube creates an ultra-modern look and is stunning on any residential feature façade.
- The Textured panels offer depth of colour and intricate textures in natural tones.
- The traditional Slimline design will provide a distinct look to any home.
- Woodgrain is a classic finish ideal for the Queensland market.
- The Smooth panel provides a minimalist look with a high level finish making it a modern walling choice.

The Designer Series offers versatility and is the ideal solution for a variety of walling applications ranging from upper storey designs and feature walls to the entire home and can also be used as a viable option to traditional construction materials such as brick.

### ALSO IN THIS ISSUE



#### PAGE 2

- md's message
- remove decking the smarter way



#### PAGE 3

- window and door bolts
- kyo toilet suite



#### PAGE 4

- news in brief
- just for fun



*We will continue to pass on the benefits of this better buying directly to you...*



The recent and now prolonged slump in the building industry has caused us to review all elements of how we do business. Part of that process involved spending more time talking to our customer base to try and get a better feel for why we are – and more importantly aren't – getting your support.

Many of you told us that whilst you believed our range and service was better than most, our pricing was sometimes off the mark. This is a hangover from operating on this site for nearly 100 years and idly watching smaller competitors enter the market working off a lower cost base.

I can report we have had further success in negotiating better pricing both individually and also through our national buying groups, Natbuild and Plumbing Plus. And the strengthening of the Australian dollar has also helped in our purchasing power. We will continue to pass on the benefits of this better buying directly to you and we will continue to try and keep you as competitive as possible.

You should have already noticed we are much keener than we have ever been. Please remember to talk with us about your projects as we may be able to find less expensive ways or cheaper product that will not just win you the job but also help you make a return. Use our sales team and internal expertise to source the best value product for your project.

As market research has also revealed that our Vantage Window offer, whilst extremely good quality, is sometimes too expensive to suit the current market's budget, we have just agreed to install a second lower cost base window line to offer a product more attuned to the present market conditions.

As we have done for almost 100 years, we will continue to constantly change our business to make sure we are offering the range and service that you require. It is a very tight market for all of us and by working together we can ensure we all get a greater share of what business is out there.

If you have any other suggestions, please feel free to email me at [bnutting@bretts.com.au](mailto:bnutting@bretts.com.au)

*Bill Nutting Jr*

Bill Nutting Jr  
MANAGING DIRECTOR

## easier, faster, smarter: remove decking and flooring the Ezy way

The Ezy-Lifter is a patented board lifting device to help remove floor boards and timber decking. The clever design reduces the back-breaking work of pulling up boards, saving time and money while reducing pain and the risk of back injuries.

### SAVE TIME

This tool will save you a significant amount of time (at least 50-70% quicker than traditional means such as using a hammer and crowbar) therefore reducing labour cost and increasing profitability.

### SAVE YOUR BACK

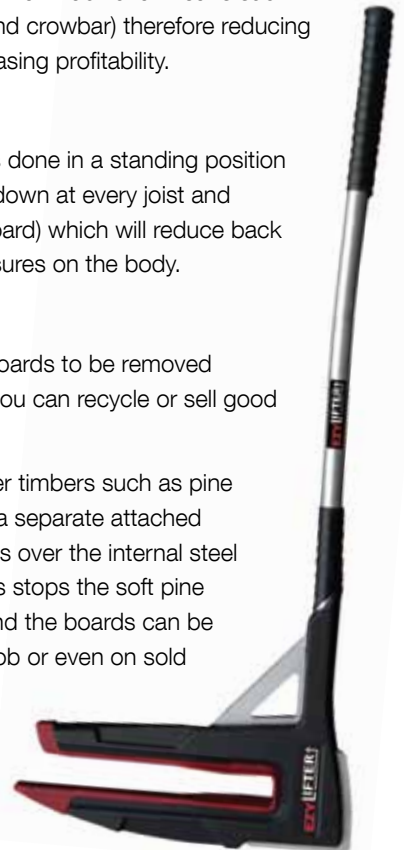
The demolition task is done in a standing position (rather than bending down at every joist and ripping up just one board) which will reduce back strain and other pressures on the body.

### SAVE TIMBER

The tool allows floorboards to be removed without damage, so you can recycle or sell good timber.

What's more, for softer timbers such as pine floor boards, there is a separate attached rubber insert that goes over the internal steel jaw of the device. This stops the soft pine from being marked and the boards can be recycled for another job or even on sold for a profit.

**BELOW:**  
Ezy-Lifter's Marc Pafumi on ABC TV's 'New Inventors'.





## form and function: kyo back-to-wall toilet suite

The Kyo back-to-wall toilet suite from Streamline combines an easily adaptable, modern-conservative design which will fit all bathroom styles, with technical flexibility.

The Kyo will fit most installations as it is available in back or bottom inlet and P or variable S trap configuration. It has a box rim for quiet and efficient flushing and is also available with a 6/3 or 4.5/3 litre flush. The Kyo back-to-wall suite is WELS water rating 4 star - 4.5L per full flush and 3L per half flush adjustable to 6L per full flush and 3L per half flush.

What's more, a quality Geberit



inlet and outlet mechanism ensures its long term reliability and the heavy duty seat features quick release, soft close hinges.

Kyo set outs:  
S trap - 85—170 mm (optional 170-250mm elbow available) and P trap—195 mm.

See the KYO back-to-wall toilet suite at Bretts Architectural.

### and in timber news: new to brets

Bretts now stock loose H3 L0SP LVLs in a range of sizes:

150x45, 200x45, 240x45, 300x45 and they all come in 4 different lengths 4.8m, 5.4m, 6.0m and 7.2m.

Also, Bretts are now stocking a new line of FJ Treated and Primed Chamfer board in three cover sizes: 128mm, 146mm and 178mm ( x 18mm), in set lengths of 5.4m.

These timber products are competitively priced, so please ask for a price for your next job.

## versatility and value:

### JQ series reverse door & window bolts

These clever, flush-fit drop bolts for doors and windows from Delf are suitable for installation on all types of timber doors and windows. And their stylish but unobtrusive design will compliment almost any décor.

The window and door bolts are available in both locking and non-locking variants and locking products can be ordered as keyed alike if required. All of the products in this range are available in a variety of finishes including; satin chrome, polished chrome and gold coloured PVD.

Dimensions of the JQ series door bolts are 200mm(L) x 38mm(W) x 17mm(D) and they have a throw of 40mm. JQ series window bolts are 115mm(L) x 29mm(W) x 13mm(D) with a throw of 20mm.

The JQ Series reverse door and window bolts from Delf are a quality product and are an excellent combination of versatility and value for money.

**delf**  
ARCHITECTURAL



#### JQ SERIES REVERSE DOOR & WINDOW BOLTS

- | Matching door and window drop bolts
- | Stylish design and flush fit
- | Available in satin chrome, polished chrome and PVD
- | Lockable products can be keyed alike
- | Optional stepped router bits available

## just for fun: definitions

**Abundance** a social event held in a farm building.

**Acquaintance** a person whom we know well enough to borrow from but not well enough to lend to.

**Adult** (n), a person who has stopped growing at both ends and is now growing in the middle.

**Boycott** somewhere to keep male babies.

**Budget** an orderly system for living beyond your means.

**Climate** what you do with a ladder.

**Coffee** (n), a person who is coughed upon.

**Committee** a group of the unwilling, picked from the unfit, to do the unnecessary.

**Déjà Moo** the feeling that you've heard this bulls\*!t before.

**Diplomacy** the art of letting someone else get your way.

**Experience** something you don't get until just after you needed it.

**Expert** someone who takes a subject you understand and makes it sound confusing.

**Flabbergasted** (adj), appalled over how much weight you have gained.

**Intense** a camping holiday.

**Middle age** when you have a choice between two temptations and you choose the one that gets you home the earliest.

**Pokémon** (n), a Jamaican proctologist.

**Rectitude** (n), the formal, dignified demeanour assumed by a proctologist immediately before he examines you.

**Toothache** (n), the pain that drives you to extraction.



Mr July  
Hamish Clarke

## wear your bretts boxers: win a "box of beer"

So don't forget...

Just send us a photo of you wearing your Bretts boxers – any which way you like – and you'll be in the running to win a "box of beer".

Each month one lucky winner will be selected from the entries received, to win a carton of beer of their choice. Not to mention the fame and glory associated with having their photo published in Bretts Bugle.

So get out your camera (or phone) and send us a photo of you wearing your Bretts boxers in the most interesting place or way!

Email to [news@bretts.com.au](mailto:news@bretts.com.au)

## seen around site: too cute times two

